

RTI Spreadsheet Add-in for Microsoft Excel

Update Spreadsheets and Charts in Real-Time; Publish Results to Other Applications

RTI Spreadsheet Add-in for Microsoft Excel extends the power of your proprietary spreadsheets and enhances your analysis process. With this add-in, Excel spreadsheets, formula results and charts can be automatically updated in real-time whenever changes to the underlying data are published via RTI Data Distribution Service, RTI's low-latency messaging middleware. Formula results can also be automatically published in real-time to other applications and users, including other instances of Microsoft Excel, Complex Event Processing (CEP) applications, and custom applications developed using RTI's applications programming interfaces.

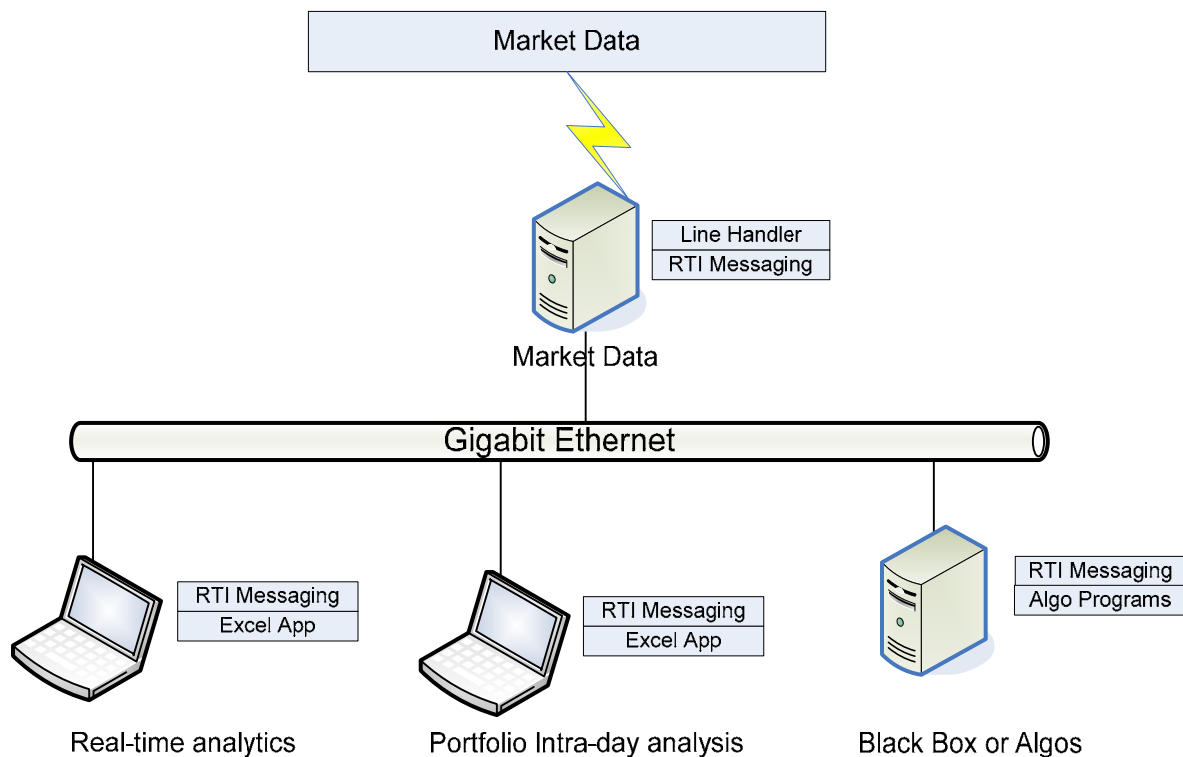


Figure 1. Typical deployment architecture. No server is required. RTI's Excel Add-In is another peer on the message bus and subscribes directly to real-time data updates.

Build Custom Applications

Microsoft Excel is widely used for portfolio analysis, to calculate valuations, and to manage capital structure models. Traditionally, integrating Excel with real-time data has required extensive custom development and often resulted in the addition of significant latency. RTI's integration eliminates the need for custom development and delivers the lowest possible latency. Spreadsheets can directly subscribe to real-time data, such as market data, without having any impact on existing publishers or requiring any software to be installed or managed other than the add-in itself. Likewise, data published from spreadsheets is delivered directly to subscribers without the need for a gateway.

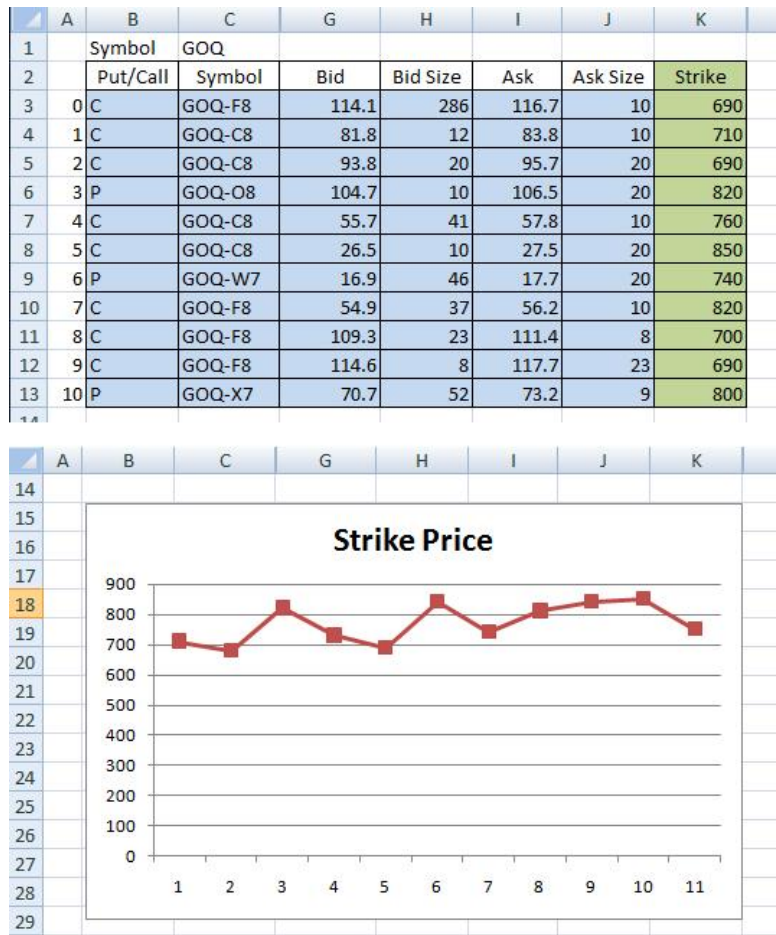


Figure 2. Create your own templates and charts with live data.

Easy Integration

RTI Spreadsheet Add-in leverages the advanced capabilities of RTI's middleware to seamlessly integrate with existing systems. Little or no configuration is required. The add-in automatically discovers existing topics (subjects) and message schemas; a wizard allows publications and subscription to be easily added by selecting the desired topics and message fields. When data is being published faster than needed by Excel spreadsheets, time-based and content filters can be used to limit the amount of data received. RTI's automatic slow subscriber handling ensures that publishers are not impacted.

RTI's add-in takes advantage of the Real-Time Data (RTD) feature of Excel.

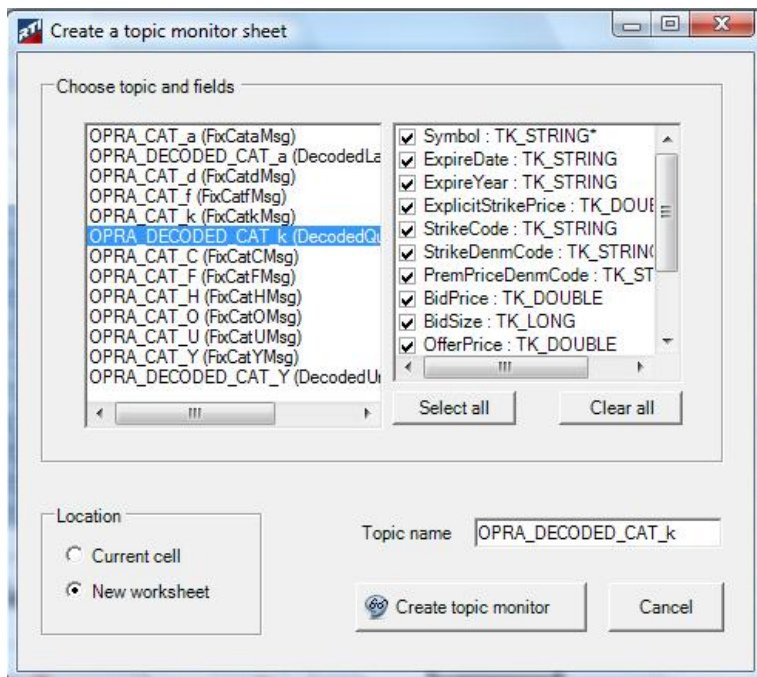


Figure 3. Point and click to insert real-time subscriptions to topic (subjects) and data fields into Excel cells.

For More Information

Visit <http://www.rti.com/industries/financial-services.html> to learn more about RTI's low-latency messaging infrastructure. To request an evaluation, email sales@rti.com.